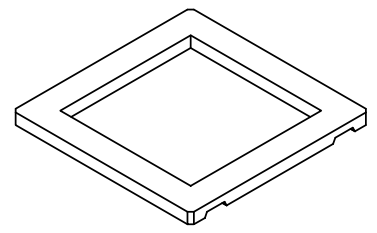
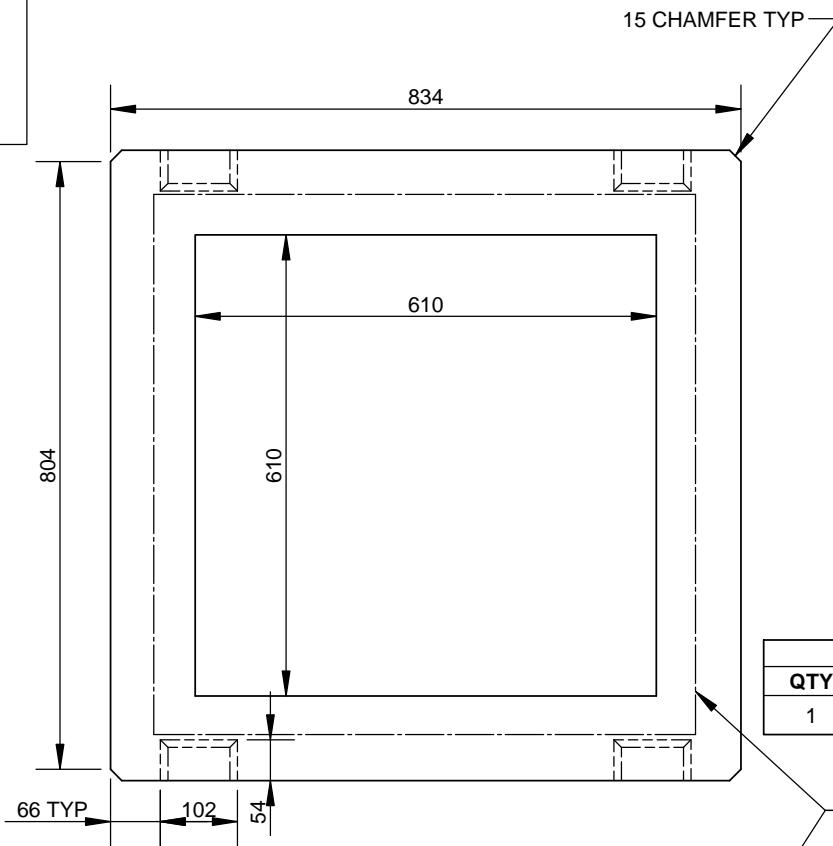


**STENCIL**  
CCP-OAKVILLE  
(HEIGHT)  
(DATE OF MFG)

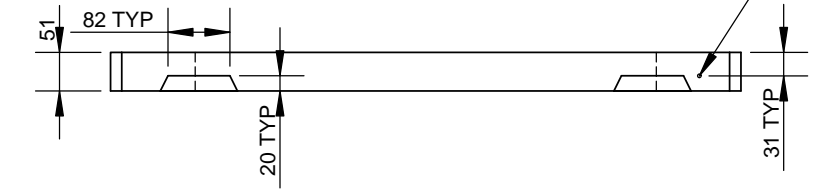


**ISOMETRIC VIEW**

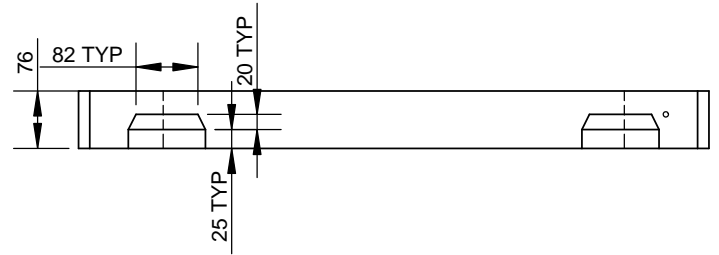
PRODUCT VARIABLES			
PART ID	BUNDLE QTY	UNIT HEIGHT	MASS (kg)
GC00501	1	51	36
GC00751	1	76	58
GCB00501	12	51	432
GCB00751	8	76	464

MATERIAL LIST		
QTY	TYPE	DESCRIPTION
1	E	D5 750 X 690 SQ. HOOP STL

D5 750 X 690  
MIN As 15mm<sup>2</sup>  
LAP 150mm OR  
BUTT WELD  
CENTRE REINFORCING



**ELEVATION VIEW FOR 50mm RING**



**ELEVATION VIEW FOR 75mm RING**

ENGINEER STAMP (IF REQUIRED)

ALL DIMENSIONS ARE IN mm  
DRAWINGS ARE NOT TO SCALE  
ALL VIEW AS POURED UNLESS SPECIFIED  
CDW TO CSA ASTM A1064  
WWF Fy = 485MPa (Deformed)  
SHIPPED IN BUNDLE

MIN. CONC STRENGTH 30 MPa  
TOLERANCES TO CSA A257.4  
DRY CAST MIX  
CEMENT TYPE HSb

CON CAST PIPE (CCP) STANDARD DRAWING

STD. OPSD 704.010 NOV 2014 REV3 PART GC00XX1

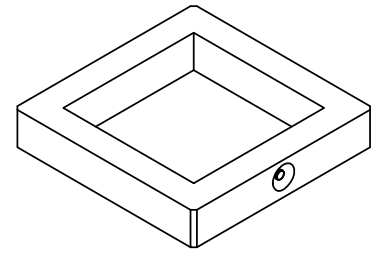
TITLE  
**CATCH BASIN GRADE RING**  
HEIGHT = 50mm, 75mm

1	REVISE AS PER LATEST STANDARD	MS	25APR2016
0	INITIAL RELEASE	SW	29FEB12

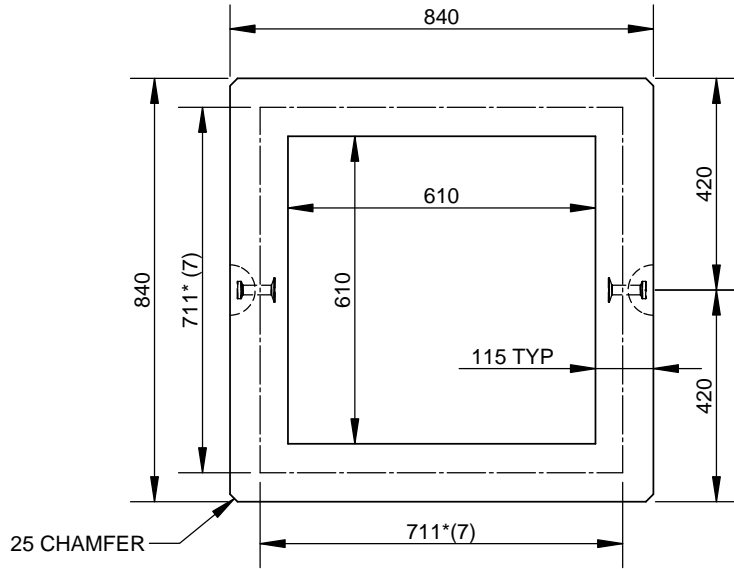
DRAWN BY	CHECKED BY	DATE	FILE	PAGE
SW	BA	29/FEB/12	CB RING	1 OF 1

**STENCIL**

CCP-GUELPH  
(HEIGHT)  
(DATE OF MFG)



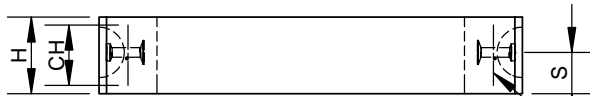
**ISOMETRIC VIEW**



**PLAN VIEW**

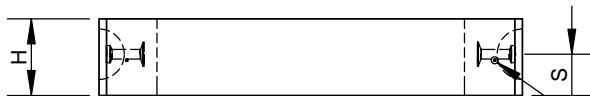
PRODUCT VARIABLES				
PART ID	H	S	CH	MASS (kg)
GC011251	127	64	75	104
GC011501	152	82	100	125

MATERIAL LIST		
QTY	TYPE	DESCRIPTION
2	E	4TON x 3" SLA
	E	4 X 4 W2.9/W2.9 (ALT DESIGN)
	E	W2.9 750 X 690 SQ. HOOP STL.



**ELEVATION VIEW (MESH)**

4X4 W2.9 / W2.9  
LAP 150mm OR BUTT WELD  
OR APPROVED EQV.  
CENTRE REINFORCING  
MIN (1) W2.9 IN CIRCUMF.



**ELEVATION VIEW (HOOP)**

W2.9 750 X 690 HOOP  
LAP 150mm OR BUTT WELD  
OR APPROVED EQV.  
CENTRE REINFORCING

ENGINEER STAMP (IF REQUIRED)

ALL DIMENSIONS ARE IN mm  
DRAWINGS ARE NOT TO SCALE  
ALL VIEW AS POURED UNLESS SPECIFIED  
WWF TO CSA ASTM A1064  
WWF Fy = 485MPa (Deformed)  
\* CAGE DIMENSION  
( ) WIRE SPACING

MIN. CONC STRENGTH 30 MPa  
TOLERANCES TO CSA A257.4  
WETCAST MIX  
CEMENT TYPE HS<sub>e</sub>

**CON CAST PIPE (CCP) STANDARD DRAWING**

STD. OPSD 704.010 NOV 2014 REV3 PART GC01XX1

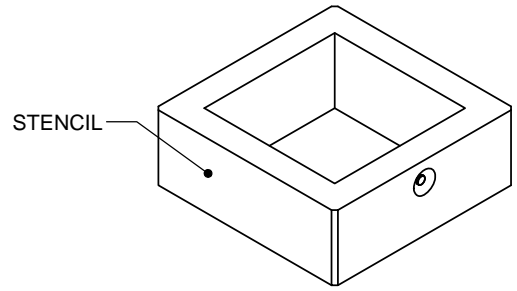
TITLE  
**CATCH BASIN GRADE RING**  
HEIGHT = 125mm, 150mm

2	REVISED AS PER LATEST STANDARD	MS	25APR2016
1	REINFORCING UPDATE	MS	03JULY14
0	INITIAL RELEASE	SW	29FEB12
REV.	DESCRIPTION	ENG.	DATE

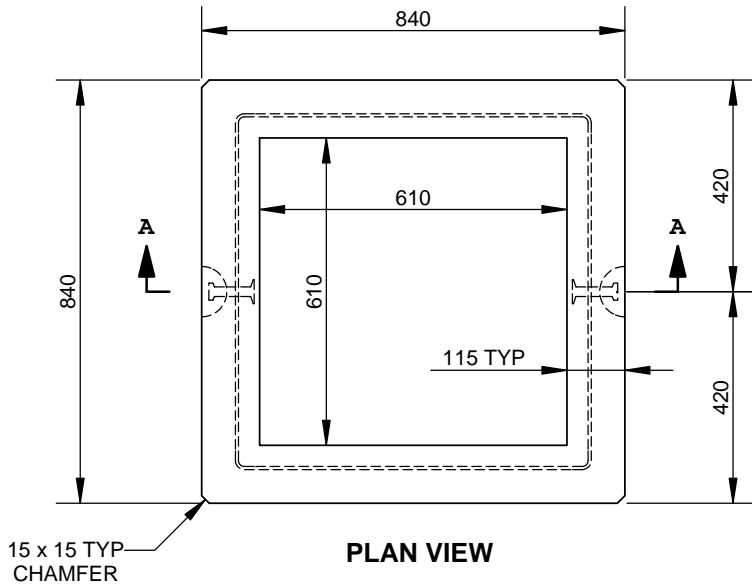
DRAWN BY SW	CHECKED BY BA	DATE 29/FEB/12	FILE CB RING WC	PAGE 1 OF 1
----------------	------------------	-------------------	--------------------	----------------

**STENCIL**

CCP-OAKVILLE  
 CSA A257.4  
 OPSD 704.010  
 600 X 600 X (H)  
 TYPE HSe  
 (DATE OF MFG)  
 (MASS) kg



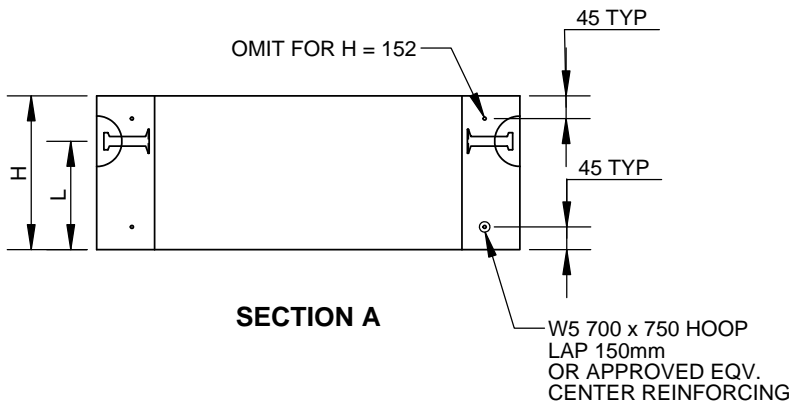
**ISOMETRIC VIEW**



**PLAN VIEW**

MATERIAL LIST		
QTY	TYPE	DESCRIPTION
2	E	4TON x 3" SLA
X	E	W5 700 X 750 SQ. HOOP STL.

PRODUCT VARIABLES				
PART ID	VARIABLE DIMENSIONS			MASS (kg)
	H	L	X	
GC01501	152	85	1	125
GC03001	305	230	2	251



**SECTION A**

ENGINEER STAMP (IF REQUIRED)

ALL DIMENSIONS ARE IN mm  
 DRAWINGS ARE NOT TO SCALE  
 ALL VIEW AS POURED UNLESS SPECIFIED  
 CDW TO ASTM A496 Fy = 450 MPa (SMOOTH)

MIN. CONC STRENGTH 30 MPa  
 TOLERANCES TO CSA A257  
 DRY CAST MIX  
 CEMENT TYPE HSe

**CON CAST PIPE (CCP) STANDARD DRAWING**

STD. OPSD 704.010 NOV 2014 REV3 PART GC0XXX1

TITLE  
**CATCH BASIN GRADE RING**  
 HEIGHT = 152, 305mm

2	MATERIAL LIST UPDATED	MS	25APR2016
1	INITIAL RELEASE	SM	29/JUN/15
0	FOR REVIEW	SM	11/JUN/15
REV.	DESCRIPTION	ENG.	DATE

DRAWN BY SM	CHECKED BY SW	DATE 29/JUN/15	FILE CB RING 305 Rev 1	PAGE 1 OF 1
----------------	------------------	-------------------	---------------------------	----------------